

# "PAINT 'n PALETTE"

Ars gratia artis

2016

April

May

Remember....Society activities this month are at nearby *Carss Park Life Saving Hall*.

- 7th Critique MELLISSA READ-DEVINE  
10th SGAS promotion at Rockdale stART activity  
14th LIFE DRAWING (AMBER)  
21st LIFE DRAWING (PENELOPE)  
Demonstration MELLISSA READ-DEVINE  
24th 8am PleinAir Group . Nurses Lane, off  
Globe St from George St Sydney  
Details: Don Kibble text 042 747 2237

Welcome back home  
to the Kogarah School of Arts

- 5th 6.30pm Critique by GLENDA CARTER  
5 - 6pm Student Mentoring Program  
12th 6pm for 6.30pm start LIFE DRAWING  
Short & Long poses by BENEDICTA  
19th 6pm for 6.30pm start Demonstration  
GLENDA CARTER  
5 - 6pm Student Mentoring Program  
26th 9.30am for 10am start LIFE DRAWING  
Short & Long poses by KATIE  
5.30pm Exhibition Opening: *The Joy of Light*  
29th 8am Plein air location TBA  
Don Kibble text 042 747 2237

## SGAS welcomes Glenda Carter in May

Widely talented Glenda has tutored, demonstrated, critiqued and judged open and society art awards for a number of years. Her work has developed a very contemporary style, focussed on strong mark making, capturing the essence rather than the photographic actuality of landscape, revealing a tension between abstraction and representation. She works in oils, acrylic, mixed media, collage, watercolour, egg tempera and print making.

She has won numerous awards for traditional and contemporary artworks. Her list of awards include the Contemporary drawing Award 2000, Roma e Lazio Painting Competition 2000 and 2001 and many others. Her works are held in private collections in Australia, Japan, USA, England and Germany.



**Artwork Of the Month** was won by Bronwen Bassett for *Woman On The Train* "A quality painting that made me smile. I love the expression and the figure's apparent movement with the parameters of the canvas. Details are pictured with affection and observation."

**People's Choice** went to Nauha Dabboussy for 'City Centre' Editor's comment: "A really colourful, striking composition; and a very popular choice for this award."



**Sydney Children's Hospital Randwick**  
Co-ordinator is George Comino 0413 632 355

- Exhibition is from 26 May to 25th August on Level 1 ArtSpace
- Be a 2016 financial member by March 31st.
- Enter 2 artworks ...\$15 per work. Forms are available at the desk, on the website, by email or posted to members supplying SAE.
- Commission of 25% to SCHF
- Entry forms are due Thursday April 28
- No manning roster - delivery and collection from School of Arts Sunday May 22, 10am - 12 noon.
- ★ **OPENING NIGHT** - Thursday 26th May 5.30 - 7.30 at the Sydney Children's Hospital



note : the Society's new email address: [st.george.art.society@gmail.com](mailto:st.george.art.society@gmail.com)

ALSO: our exciting new web site will be active soon

## President's Press

SCHOOL OF ARTS REFURBISHMENT APRIL 1-30

I must sincerely thank Don, Jim and George. Their enormous efforts in the relocation of all the society's property and equipment; much of which is stored in our homes and garages for the month, is much appreciated.

Huge thanks to Arthur Tilley: all our 20 screens are in his garage. To John Harrow for his assistance moving equipment and screens and researching lighting for our new screens.

This manoeuvre has been a substantial challenge, although it's been an opportunity to discard old and superfluous items; reorganise records and storage.

Kogarah City Council plans to upgrade various other aspects of this heritage building and we're looking forward to resuming our tenancy in the refurbished School of Arts in May.

In the meantime...Carss Park Life Saving Hall is our cosy, home...please join us there for life-drawing as usual; and the demonstration of her 'garden' vibrant acrylics by the talented Mellissa Read-Devine.

SYDNEY CHILDREN'S HOSPITAL EXHIBITION ...will be an exciting experience to be part of a combined exhibition in this special environment to support the lives of delicate and vulnerable children and their families.

Opening Night of the exhibition – Thursday 26<sup>th</sup> May 5.30-7.30pm at the Sydney Children's Hospital – free entry. E-flyer, prepared by the SCH Foundation, released early May features 'Dappled Light' by Ros Psakis for SGAS to showcase our art exhibition – THE JOY OF LIGHT.

The EXHIBITION is on Level 1 ArtSpace from 26<sup>th</sup> May until 25<sup>th</sup> August.

STUDENT PROGRAM 2016 –

These workshops are held fortnightly with tutor Kristine & co-ordinator Jim and 14 local high schools students. The classes will resume in May at the School of Arts.

**ROS PSAKIS** 9587 8857 \$30 Syd Frost Memorial Hall, Hawthorne Street, RAMSGATE Wed. 10.30 - 2.30pm. (W/shops - 1st Wed \$35)

**DON KIBBLE** please text 042 747 2237. \$30 Ramsgate Life Saving Hall, RAMSGATE BEACH Wednesday 10.30 - 1.00pm

**YVONNE FERGUSON** 9529 5538 \$25 Home Studio 130 The Promenade, SANS SOUCI Mon. & Fri. 2 - 4.30pm yvonneferguson1@hotmail.com

**DENISE KASSIS** 9523 3458 Mob: 0420 740 552 Mixed Media \$30. Home Studio CARINGBAH Tuesday and Friday 10am - 12 noon

ART TUITION

Paint 'n Palette is printed as a community service at the office of the Hon. David Coleman MP Federal Member for Banks

### ST GEORGE ART SOCIETY INC

Meets at 6.30pm on Thursday evenings at Kogarah School of Arts. Cnr, Queens Avenue and Bowns Road KOGARAH

ALL CORRESPONDENCE TO: PO Box 4045 KOGARAH BAY 2217 President Jean Harrow 0400 207 271

Editor: Don Kibble 042 747 2237 [st.george.art.society@gmail.com](mailto:st.george.art.society@gmail.com)

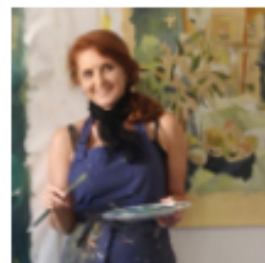


Founding member of the Combined Art Societies of Sydney

## Member's Profile ...

### Kristine Ballard

A member of St George Art Society for more than 6 years, Kristine paints from her studio in Sydenham and has exhibited both nationally and internationally.



Saturated colour and strong movement are signature strokes of a style she calls 'Fragmatism'. Images float, dissolve and fragment across the canvas. She specialises in semi-abstract still life and landscape paintings. Connections to our environment and the objects that fill them, are themes that continue to inspire her creative practice. Translating the vibrancy of life through colour is her mission. Her ambition is to take the 'still' out of 'still life'.

Kristine's art residencies in New York, Venice and Fiji have played an important part of her artistic development. She also enjoys helping others find their own creative path, which she does by conducting art functions and teaching one-to-one art classes.

## CO-Create

St George Art Society, with tutor Kristine and co-ordinator Jim West have undertaken a youth and creativity program to nurture the creative ideas and practices in local



youth. The mission is to encourage community engagement and awareness, and provide practical ways to improve skills concerning the local fine arts industry.

Four local schools are in the program: Moorefield Girls High, James Cook Boys Technology High, St. George Girls High and Kogarah High School. The enthusiasm of teachers, principals and students have made this possible. The program has been designed to help the 14 students, aged 15-17 years, prepare for undertaking art projects in their senior years and beyond.

open  
6  
days



10% off  
art materials  
15% off framing  
for STGAS  
Members

VISUAL ART  
AT ARNCLIFFE  
YOUR ONE-STOP-SHOP FOR

QUALITY FRAMING & ART SUPPLIES

Hours: Mon - Fri 8.30am - 4.30. Sat. 10.00am - 2.00pm  
2 Terry St. (Off Princes Highway) Arncliffe NSW  
[shop@vaaa.com.au](http://shop@vaaa.com.au)

Ph: 9567 2355 Fax: 9599 3729

