

**FROM THE PRESIDENT
Jean Harrow**



My trip to the UK to visit my family is filled with special memories. The warm and sunny weather certainly added to the atmosphere of an English summer ... it was really difficult to return to winter in Australia. But what stunning days we've enjoyed - beautiful enough to go plein air painting. Maybe hope you'll all feel encouraged too, and there'll emerge something warranting an entry into the **NSW Parliament Plein Air Prize**...entries open until 2nd August.

Our Annual Art Show 2018 will be held on the second weekend November 9,10,11 and entries are due on Thursday November 8.

Chan Dissanayake, the award winning watercolourist has agreed to judge this event.

The Lamrock Committee will once again share in this event by selling raffle tickets for a prize-winning artwork donated by one of our members. This traditionally raises considerable funds towards the St George Public Hospital. **Please consider** donating one of your best pieces of art. You can get in touch with me by phone or by email to SGAS.

All offers will be considered by the Lamrock Committee.

Art Workshops at SGAS - we are planning workshops for late August and September; possibly for abstract and contemporary acrylic or watercolour. Keep an eye on emails to confirm details.

Life-drawing will not resume before late August - the cold weather is uncomfortable for our models and for ourselves in the large hall. A day session may be possible at the end of August if the weather proves warm enough. Notification will be emailed to members and friends.

DIARY DATES

August 2018

Thurs 2nd	6.45 Critique - Joe Bezzina Members may bring (2) art works for appraisal Supper to follow
Sun 5th	8am Plein Air Group Cooks River, Tempe
Tues 7th	2 - 4.30 pm <i>Art Studio</i> for SketchAbility Exploring other mediums and Open painting. Visitors welcome
Tues 14th	2 - 4.30 pm SketchAbility 2 - 4.30 pm <i>Art Studio</i> for open painting
Thurs 16th	6.45 pm Demonstration Melissa Read-Devine Supper to follow
Tues 21st	2 - 4.30 pm SketchAbility 2 - 4.30 pm <i>Art Studio</i> for open painting
Tues 28th	2 - 4.30 pm SketchAbility 2 - 4.30 pm <i>Art Studio</i> for open painting

**For Sketchability and Plein Air enquiries
please text only to Don 0427 472 237**

Congratulations Jan Callus & Marion Chapman for their achievements in the **Oyster Bay Art & Craft Show 2018**

Jan received Judges Choice, 'Major Prize' and 'Winner' of the Printmaking/Drawing Prize for her etching 'Doorway at the top of the Stairs'



Marion's work, 'Mt. Roland, Tasmania' received 'Winner' in the Watercolour Section



ARTWORK OF THE MONTH

Congratulations to Angela Iliadis whose abstract artwork 'Red Ochre' achieved Artwork of the Month for July. Critic Don Kibble commented:
"A random expression with a sense of completeness. Very contemporary."



PEOPLE'S CHOICE

Congratulations to Yvonne Ferguson for her artwork in oil, 'Having a Break' chosen as People's Choice Award for July



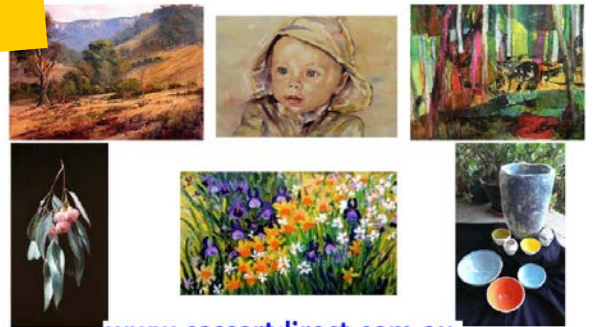
CASS Art Direct Open Studios art trail
'October is Art Month'

What's On

CASTLE HILL ART SOCIETY INC.
2018 Annual Art Awards

Prize Money Approx. \$5,000

ENTRY CUT-OFF: FRIDAY 31st AUGUST
castlehillartsociety.org.au



www.cassartdirect.com.au

AUGUST CRITIC Joe Bezzina

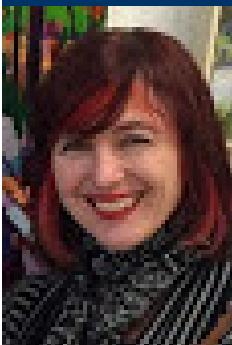
Joe is a Fellow of the Royal Art Society NSW and a teacher at the Royal Art Society School.

'My attachment with the landscape has always presented me with a rich source of subject matter.

What has changed with my artwork over the years is more about the isolation, colour and the underlying lines and shapes that run through our landscape. When I paint en plein air it reinvigorates the mind to see and capture, in a more fleeting way, the light, atmosphere and movement in the land before me. What art means to me can best be summed up by Piet Mondrian who said: "The position of the artist is humble. He is essentially a channel."



AUGUST DEMONSTRATOR Mellissa Read-Devine



Mellissa has studied & practiced print making and painting since the mid '90s & is a recipient of many prizes and awards. Her sought after works are part of many private and public collections around the world. Living in rural Sydney on the Hawkesbury River, Mellissa's work ranges between vibrant interpretations of her local landscape to intricate print making in wood & linocuts. Her botanical interest and her amazing sense of colour work together to produce a unique blend of natural and aesthetic, joyous and calm.

Mellissa is an Associate member of the Royal Art Society NSW.

We look forward to welcoming Joe and Mellissa to our Art Society.

Critique - August 2 Joe Bezzina

Demonstration - August 16th Mellissa Read-Devine



June Demonstration - Glenda Carter

Glenda Carter presented an expert and absorbing demonstration of abstract impressionism painting using acrylics. Starting with a random pattern of tissue stuck to watercolour paper (using white paint) Glenda commenced with a mark and developed this into an abstract landscape painting.



The paper was taped on the edges to encourage gestural strokes across the full size of the paper. Colours added didn't necessarily reflect true landscape colours but flowed from the artist's creativity. Only one brush was used, turning in different ways. Dark and lights were added where Glenda wanted them, not as in a conventional landscape.

The accent was on mark making, particularly using oil pastels. Glenda reached a point where the painting had a sense of intrigue and colour, before it would be set aside for finishing at some later time.

Although abstract, the impression of a landscape was there.

Thank you Glenda for an intriguing and stimulating demonstration.

Thanks to Col Parker for this summary



Art Studio has Expanded!

In addition to sketching the group will begin exploring mark making with different mediums. To start there will be transparent watercolours and acrylics. Oils and pastel will be included in the following weeks.

Many forms of artwork actually begin with sketching out thoughts...and whilst the medium is often the message, characterisation is always the main interest. It's intended to be all good fun.

Tuesday afternoons 2 - 4pm. Members \$5. Visitors welcome \$10.

Membership is available and as a member, you can enjoy many more benefits.



Leonardo da Vinci noticed that 'Green and blue are invariably accentuated in half-shadows, whereas yellow, red and white are accentuated in the light parts of the shadow. Observe the contrast between the flaming red of geraniums and their background of dark green leaves. In twilight notice this contrast is clearly reversed, the flowers now appearing much darker than the leaves. Similarly, find a picture with red and blue and note how the colours appear equally bright by day, but by night the blue becomes far brighter of the two. This colour effect is due to the nature of the cones and rods in the human eye.

From: The nature of Light and Colour in the Open Air
by Professor M. Minnaert of the University of Utrecht

The Purkinje effect is named after Czech anatomist Jan Purkyně and is the tendency for the peak luminance sensitivity of the human eye to shift toward the blue end of the colour spectrum at low illumination levels as part of dark adaptation.

TUITION

DON KIBBLE text 0427 472 237

Life Saving Hall, Ramsgate Beach
Wed. 10.30 - 1.00pm \$30

YVONNE FERGUSON 9529 5536

Home Studio, Sans Souci
Mon. & Fri. 10am - 12.30 \$30
Private Tuition \$30 per hour

ROS PSAKIS 9587 8857

Syd Frost Hall, Ramsgate
Wed. 10.30 - 2.30pm. \$40
W/shops - 1st Wed. \$40

DENISE KASSIS 0420 740 552

Home Studio, Caringbah
Tues. & Thurs. 10.30am - 12.30pm
Mixed Media \$40.

MARION CHAPMAN 0411 665 443

Home studio, Sylvania
Intro to Watercolour - supplies incl.
One hour Private Tuition \$80

Paint 'n Palette is printed as a Community Service at

the Office of THE HON. DAVID COLEMAN MP

Federal Member for Banks • Assistant Minister for Finance
22 Revesby Place, REVESBY NSW 2212 • T 02 9771 3400
F 02 9773 4144 • Parliament 02 6277 4188

ST. GEORGE ART SOCIETY INC. • PO Box 4045 KOGARAH BAY 2217 • School of Arts Queens Avenue KOGARAH
PO Box 4045 KOGARAH BAY 2217 • E: st.george.art.society@gmail.com • W: www.stgeorgeartsociety.com.au

Founding Member of the Combined Art Societies of Sydney



ART, ADVERTISEMENTS & BUSINESS SPONSORSHIP

There are 3 options available for an Ad.

* Large size 85mm x 125mm * Small size 62mm x 85mm * Tuition Box: 4 lines (no image)

Distribution includes: SGAS members, Art societies, SGAS website, Art suppliers, Libraries.

For Enquiries & Pricing email: st.george.art.society@gmail.com

Would you like your business to become a sponsor of St. George Art Society?

There are many ways you can do this and have your business promoted on the website and at the Annual Art Show. For more information email st.george.art.society@gmail.com

Visual Art
At Arncliffe



SGAS MEMBERS
10% off
art materials
15% off framing

QUALITY FRAMING & ART SUPPLIES

2 Terry Street, Arncliffe

Mon - Fri 8.30am - 4.30pm

Sat 10am - 2pm

Phone: 9567 2355 E: shop@vaaa.com.au



ART LESSONS

ALL MEDIUMS

YVONNE FERGUSON

Home Studio SANS SOUCI
Mon. & Fri. 10am - 12.30 \$30
Private Tuition \$30 per hour
yvonneferguson1@hotmail.com

art?
classes?

WEDNESDAYS FROM 11AM
@ RamsgateLifesavingHall
?????...kibbleart@optusnet.com.au

ART ON BURRANEER
Studio Gallery South Caringbah



Paintings by established artists,
Regular classes, workshops
& demonstrations.

Artist & Tutor
Denise Kassis 0420 740 552
denise@kassis.com.au



Like us on facebook



Long summer days of blue and gold.

Art Classes with Ros Psakis

Wednesdays 10.30 to 2.30

Syd Frost Community Hall
Hawthorne Street,
Ramsgate.

Easy to understand teaching methods, individual attention, regular workshops,
friendly class, fast progress, no terms, come any Wednesday, award winning tutor.

email me for further info.
raspsakis@optusnet.com.au .. www.raspsakis.com .. www.facebook.com/raspsakis