

**FROM THE PRESIDENT  
Jean Harrow**



New members this month have taken advantage of our Mellissa Read-Devine workshop offer for September to join the SGAS family.

Enrolment forms are available (email & website) for **Yvonne Langshaw's** mixed media workshop Sunday 30<sup>th</sup> September – '**Drawn to Paint**' - creative and innovative techniques to be explored.

Further workshops are in the planning stage for watercolour and oil...your input & feedback is important to the committee.

**Life-drawing** is anticipated to be rescheduled for the 27<sup>th</sup> September, the morning 10am until 12 noon. Confirmation by email and website.

**SketchAbility** group continues to grow and thrive, thanks to leader and tutor Don. He's got quite a following - Tuesday afternoons at KSoA; join in the friendly environment to experiment and discover – low cost for members.

**Plein Air** is rescheduled due to Father's Day and a Sunday workshop – now 23 September at Dunningham Park, Cronulla (end of the Kingsway).

**Farmers Relief Fund Auction** – held Sunday 26<sup>th</sup> August at South Hurstville RSL – collated by *Jan Schuster- Callus* - thanks to those 8 SGAS Members who contributed by donation of artworks to a special and urgent cause (*Jan Callus, Marion Chapman, Don Kibble, Angela Iliadis, Marlene Weaver, Helen Dubrovich, Trish Zavattaro and Jean Harrow*).

Combined Art Societies of Sydney – Art of Sydney entry form is available on their website or by email. A desk copy will be available for inspection. Please note their condition of entry is to volunteer some time to the exhibition roster as this affects the time and efforts of all SGAS member entrants.

Open studio – October month – notice emailed. For further details check the CASS website.

**2018 SGAS ANNUAL ART EXHIBITION**

DATES for your Calendar:-

Entry forms – open October 1<sup>st</sup> (email, website and mail)  
– close 31<sup>st</sup> October

Art delivery and judging Thursday 8<sup>th</sup>; Opening & Presentation Night Friday 9<sup>th</sup>; exhibition continues Saturday 10<sup>th</sup> & Sunday 11<sup>th</sup> November – closes at 4pm.

Venue – KOGARAH SCHOOL OF ARTS

Judge – CHAN DISSANAYAKE

Raffle artwork donated by feature artist –  
MYRLE KING

Member entry includes free ticket to Opening Night  
\$10 entry for the Lamrock Committee fund-raising event of Opening Night – includes refreshments & bar

## Diary Dates

### October 2018

<b>Tues 2</b>	2 - 4.30 pm <i>Art Studio</i> for SketchAbility Exploring other mediums and Open painting. Visitors welcome
<b>Thurs 4</b>	6.45 Critique - <b>Ken Tucker</b> Members may bring (2) art works for appraisal Supper to follow
<b>Sun 7</b>	8.am Plein Air Dunningham Park Cronulla (opp. Northies)
<b>Tues 9</b>	2 - 4.30 pm <i>Art Studio</i> for SketchAbility Exploring other mediums and Open painting. Visitors welcome
<b>Thurs 11</b>	<b>6.30 Life Drawing - (To be finalised)</b>
<b>Tues 16</b>	2 - 4.30 pm SketchAbility 2 - 4.30 pm <i>Art Studio</i> for open painting
<b>Thurs 18</b>	6.45 pm Demonstration - <b>Ken Tucker</b> Supper to follow
<b>Tues 23</b>	2 - 4.30 pm SketchAbility 2 - 4.30 pm <i>Art Studio</i> for open painting
<b>Thurs 25</b>	<b>10am Life Drawing - (To be finalised)</b>
<b>Tues 30</b>	2 - 4.30 pm SketchAbility 2 - 4.30 pm <i>Art Studio</i> for open painting

**For Sketchability and Plein Air enquiries  
please text only to Don 0427 472 237**



**Yvonne Langshaw  
'Drawn to Paint'  
A Workshop in Acrylic &  
Mixed Media  
30 September 10am - 4pm  
At Carss Park Hall,  
Carwar Ave Carss Park**

**Cost:** Members \$60

Non Members \$75 - Includes 6 months membership +  
Eligibility to exhibit in our Members'  
Annual Art Exhibition - Nov. 2018

**To Enrol:** Email: [st.george.art.society@gmail.com](mailto:st.george.art.society@gmail.com)

or on the website [www.stgeorgeartsociety.com.au](http://www.stgeorgeartsociety.com.au)

Download, fill in and email the enrolment form in the Forms Menu



# CONGRATULATIONS



# ARTWORK OF THE MONTH AUGUST

*'The Wetlands at Rockdale'*

by Don Kibble

Critic Greg Hansell commented:

*"Good tonal changes helping to show a bright, clear day."*

# PEOPLE'S CHOICE

*'Benedicta'*

by Marlene Weaver



Greg spoke about his work and the principles he adheres to such as using a wide tonal change and placing lights and darks together:

*"You won't get good lights until you get good darks"*

# SGAS WELCOMES

## Ken Tucker - 6.30pm 4th October Critique

From portraiture to landscape, still life and abstraction, Ken's varied subject matter reflects his ongoing technical interest in the use of light...

Members may bring 2 unframed works for appraisal by Ken  
Enjoy Supper with us after the Critique.



## Ken Tucker - 6.30pm 18th October Demonstration

Ken has a Fine Arts Diploma Western Region TAFE Dubbo and over many years has exhibited widely, and has achieved many awards. His works are held in many collections throughout Australia. Ken has enjoyed residencies in Australia and overseas and has been involved with collaborative projects and workshops. He describes his work:



*Whilst also currently creating in the disciplines of sculpture, printmaking, assemblages and collage, my art practice has, for over 35 years, been driven with an obsession of painting the Australian landscape. My current sea and landscape paintings are minimal or abstract in nature, and there is always an underpinning agenda of the visual dialogue that occurs by technically exploring the play of light in an artwork. A continued exploration of mixed paint mediums, inks, fiberglass and pours are a constant in my current artworks.*



# Help Needed

Our Society is providing a Creative Arts program for interested residents of Blakehurst Aged Care, on every second Monday, for one hour. If you have the occasional hour to spare we would welcome your help. Please email Yvonne [yvonneferguson1@hotmail.com](mailto:yvonneferguson1@hotmail.com) for further information.



## August Demonstration Mellissa Read-Devine

**Mellissa** started by drawing using paint, blocking in solid colour on large shapes. As she progressed she planned her tonal variations, ensuring that the boldness of colour didn't override the depth created by her tonal subtleties. The pleasure she derived from her depiction of colour in the landscape was evident with every application. Mellissa's confidence in her range of colours is amazing and her works show that confidence. Thank you Mellissa for an inspiring demonstration.



## 'October is Art Month'

The Combined Art Societies of Sydney Inc.

**CASS Art Direct Open Studios Art Trail** is an opportunity to experience the inspired & unique work of local artists. 10 Artist Studios have registered, so far, during October Art Month

### Artist Call Out:

Please visit the website to register your Art Studio and for Dates and Open Studio locations around Sydney: [www.cassartdirect.com.au](http://www.cassartdirect.com.au)



## Welcome to New Members:

Jennifer Murray, Rosalie Duligal,  
Sarah Kalidis, Joy Bye,  
Nicole Barbe, Mirna Gamboa,  
Juliette K and  
Joanna Moschella

## TUITION

**DON KIBBLE** text 0427 472 237

Ramsgate Life Saving Hall, RAMSGATE BEACH  
Wed. 10.30 - 1.00pm \$30

**YVONNE FERGUSON** 9529 5536

Home Studio 130 The Promenade SANS SOUCI  
Mon. & Tues. 10am - 12.30 \$30

Private Tuition \$30 per hour

**ROS PSAKIS** 587 8857

Syd Frost Memorial Hall,  
Hawthorne St. RAMSGATE

Wed. 10.30 - 2.30pm. \$40

W/shops - 1st Wed. 10.30 - 2.30 \$40

**DENISE KASSIS** 0420 740 552

Home Studio CARINGBAH Tues. and Thurs.  
10.30am - 12.30pm Mixed Media \$40.

**MARION CHAPMAN** 0411 665 443

Home studio, SYLVANIA

Intro to Watercolour - All supplies incl.

1 hour private tuition \$80

## WARWICK FULLER FRAME SALE

29 Sep 2018

2pm - 4pm

306 Megalong Place  
Kanimbla, 2790

[www.nepeanartsociety.wildapricot.org](http://www.nepeanartsociety.wildapricot.org)

Paint 'n Palette is printed as a Community Service  
at the Office of

THE HON. DAVID COLEMAN MP

Federal Member for Banks

Minister for Immigration, Citizenship  
and Multicultural Affairs

22 Revesby Place, REVESBY NSW 2212

T 02 9771 3400 F 02 9773 4144

Parliament 02 6277 4188

### Sketch Everything and Keep your Curiosity Fresh

If you begin with the middle tone and work up from it toward the darks so that you deal last with your highest lights and darkest darks, you avoid false accents. John Singer Sargent



ST. GEORGE ART SOCIETY INC. • PO Box 4045 KOGARAH BAY 2217 • School of Arts Queens Avenue KOGARAH  
PO Box 4045 KOGARAH BAY 2217 • E: [st.george.art.society@gmail.com](mailto:st.george.art.society@gmail.com) • W: [www.stgeorgeartsociety.com.au](http://www.stgeorgeartsociety.com.au)

Founding Member of the Combined Art Societies of Sydney

# ART, ADVERTISEMENTS & BUSINESS SPONSORSHIP

There are 3 options available for an Ad.

\* Large size 85mm x 125mm \* Small size 62mm x 85mm \* Tuition Box: 4 lines (no image)

Distribution includes: SGAS members, Art societies, SGAS website, Art suppliers, Libraries.

For Enquiries & Pricing email: [st.george.art.society@gmail.com](mailto:st.george.art.society@gmail.com)

Would you like your business to become a sponsor of St. George Art Society?

There are many ways you can do this and have your business promoted on the website and at the Annual Art Show. For more information email [st.george.art.society@gmail.com](mailto:st.george.art.society@gmail.com)

Visual Art  
At Arncliffe



SGAS MEMBERS  
10% off  
art materials  
15% off framing

QUALITY FRAMING & ART SUPPLIES

2 Terry Street, Arncliffe

Mon - Fri 8.30am - 4.30pm

Sat 10am - 2pm

Phone: 9567 2355 E: [shop@vaaa.com.au](mailto:shop@vaaa.com.au)



ART LESSONS

ALL MEDIUMS

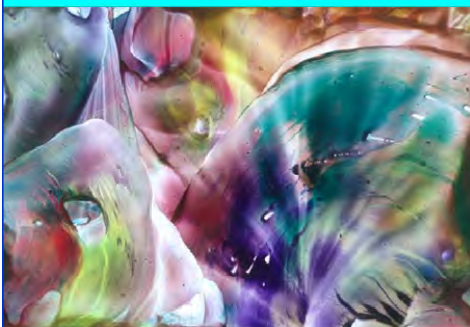
YVONNE FERGUSON

Home Studio SANS SOUCI  
Mon. & Tues. 10am - 12.30 \$30  
Private Tuition \$30 per hour  
[yvonneferguson1@hotmail.com](mailto:yvonneferguson1@hotmail.com)

art?  
classes?

WEDNESDAYS FROM 11AM  
@ RamsgateLifesavingHall  
?????...[kibbleart@optusnet.com.au](mailto:kibbleart@optusnet.com.au)

ART ON BURRANEER  
Studio Gallery South Caringbah



Paintings by established artists,  
Regular classes, workshops  
& demonstrations.

Artist & Tutor  
Denise Kassis 0420 740 552  
[denise@kassis.com.au](mailto:denise@kassis.com.au)



Like us on facebook



Long summer days of blue and gold.

Art Classes with Ros Psakis

Wednesdays 10.30 to 2.30

Syd Frost Community Hall  
Hawthorne Street,  
Ramsgate.

Easy to understand teaching methods, individual attention, regular workshops,  
friendly class, fast progress, no terms, come any Wednesday, award winning tutor.

email me for further info.  
[raspsakis@optusnet.com.au](mailto:raspsakis@optusnet.com.au) .. [www.raspsakis.com](http://www.raspsakis.com) .. [www.facebook.com/raspsakis](http://www.facebook.com/raspsakis)