



**President's Press
Jean Harrow**

Annual Members Art Show

1. Entries will close on **Thursday 17 October**. Please ensure that you've sent off your entry to Marion or hand in to a committee member and at the desk. Labels we prefer, have been emailed ready for your art entries.
3. Make sure your art meets the conditions of presentation.
4. Check you've taken a photo of the work, before framing preferably, in case the society needs a copy for promotional purposes.
5. **Deliver Thursday 24 October between 4 and 6 pm** - judging will start at 6.30pm... so no late entries permitted.
6. Helpers...send your offers of help to Jean...if handling artworks guidance will be given to ensure maximum safety. Please be versatile and accommodating if asked.
7. **Can you supply and serve?** Café on Saturday and Sunday ... cakes and slices needed - bet there's some great bakers in our society.
8. Sunday close...your offer to help pack up is valued and appreciated... we need support and cooperation.

*Thank you to all those in the background
making everything tick ...
without them your art show wouldn't happen
so please lend a hand*

Make Your Mark. Please come along to support the students at the Presentation by Mark Coure MP on **Saturday 26 October 2pm**. The Student Display as part of the Art Show weekend will provide a well-deserved showcase for their art.

New Perpetual Prize

Thank you to Arthur Tilley who has donated 'Pear-shaped' by Mitzi Tilley which will be the perpetual prize for Excellence



Raffle Prize

Thank you to Myrle King for the donation of the painting 'Merroo', by Helen Goldsmith, for the raffle prize. Tickets are \$2 each, 3 for \$5, 7 for \$10 and is to be drawn on Sunday 27th October. All proceeds go to St George Public Hospital.



DIARY DATES

NOVEMBER 2019

Sun 3	8am Plein Air Group see details page 2
Tues 5	2 - 4.30 pm SketchAbility
Thurs 7	6.30 Critique - Jani Nanavati Supper to follow
Tues 12	2 - 4.30 pm SketchAbility
Thurs 14	6.30pm Life Drawing Professional model Please register your attendance by email st.george.art.society@gmail.com
Tues 19	2 - 4.30 pm SketchAbility
Thurs 21	6.30 Demonstration Jani Nanavati Silk Painting Supper to follow
Tues 26	2 - 4.30 pm SketchAbility
Thurs 28	10am- 12 noon Life Drawing Professional Model

For SketchAbility & Plein air details please text only to Don 0427 472 237

Member Achievements

Congratulations to **Nauha Dabboussy and Angela Iliadis** who both received Highly Commended in Drummoyne Art Show and to **Jan Schuster-Callus** who won the Georges River Council Prize in 101 Art Show Section 3 for her work on paper 'Gateway to the Unknown' pastel, charcoal, pencil, mixed media collage. Congratulations to **Marlene Weaver** who is a finalist in the Georges River Art Prize.

Life Drawing

NB last 2 sessions for 2019

Thursday 14 Nov. evening at 6.30
Thursday 28 Nov. morning at 10 am

Contact

Don 0427 472 237
Yvonne 0404 128 230

**We look forward to welcoming
The Hon. David Coleman, Mr. Chris Minns MP,
Mr. Mark Coure, MP,
Aboriginal elder and artist Deanna Schreiber
and the 2019 Art Show judge,
artist Wendy Sharpe.**



September Art of the Month

Congratulations to Nauha Dabboussy whose painting 'Celebration' achieved Art of the Month for October.

From critic Marlene Weaver:

'A very brave, fun painting, full of shapes, colour and design'



People's Choice



Congratulations to Denise Kassis who received the People's Choice award for her painting 'A Touch of Gold'

Paint 'n Palette is printed as a Community Service at the Office of
THE HON. DAVID COLEMAN MP
Federal Member for Banks
Minister for Immigration, Citizenship, Migrant Services and
Multicultural Affairs
22 Revesby Place, REVESBY NSW 2212
T. 02 9771 3400 | F. 02 9773 4144
Parliament 02 6277 4188

Welcome to New Member - Michael Warren

Plein Air

Sunday 3 November from 8am.

November's Plein Air meet is an interesting mix of past and present with plenty of natural beauty thrown in.

Our meeting place is on the corner of First Ave and St. Georges Pde HURSTVILLE
For more details

Text Don 042 747 2237



ST. GEORGE ART SOCIETY INC. • PO Box 4045 KOGARAH BAY 2217 • School of Arts Queens Avenue KOGARAH
PO Box 4045 KOGARAH BAY 2217 • E: st.george.art.society@gmail.com • W: www.stgeorgeartsociety.com.au
Founding Member of the Combined Art Societies of Sydney



SGAS welcomes Jani Nanavati Critic and Demonstrator for November 2019

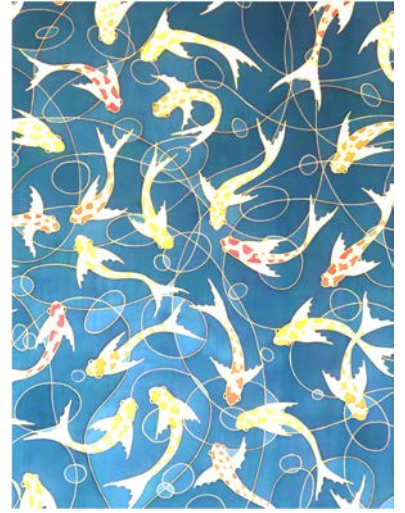
Jani's art is always popular for Art of the Month and People's Choice awards and we look forward to her demonstration of one of her art passions - silk painting.

Jani uses steam set high quality silk dyes and acrylic gutta on 100% silk, and acrylic resist on silk to create lively and vibrant paintings and wearable art.



Last year Jani exhibited at Hazelhurst's Wall of Art and in the annual St George Art Society's exhibition where she gained a highly commended for *Drought Inspired Lizards* (pictured).

Jani is a member of 2019 SGAS committee and we look forward to welcoming her for the Critique on Thursday 7 November at 6.30 and as demonstrator on Thursday 21 November at 6.30.



Our Perpetual Prizes



'The Australian Bush' by John Upton
The John Upton Prize for Traditional transparent watercolour

Watercolour by Myrle King
Myrle King Award for Traditional still life



'Pear-shaped' by Mitzi Tilley
The Mitzi Tilley Award for Excellence



Muriel Harding by Mitzi Tilley
Muriel Harding Portrait Prize

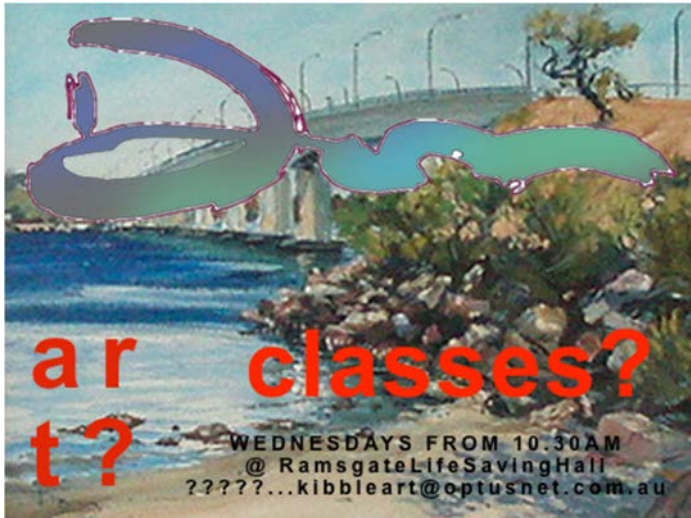
September Demonstration - Tara Winona

Tara delighted the audience with her easy going, fun approach to her work, but her attention to detail and precise brush strokes showed just how professional and passionate she is about her subjects like the powerful owl. Thank you Tara for an inspirational demonstration.



ART, ADVERTISEMENTS & BUSINESS SPONSORSHIP

Large size 85mm x 125mm Small size 62mm x 85mm Tuition Box: 4 lines
Large distribution includes SGAS members, art societies, SGAS website, art supply locations, libraries
Enquiries & pricing : E: st.george.art.society@gmail.com Attn. Jean Harrow



art classes?

WEDNESDAYS FROM 10.30AM
@ RamsgateLifeSavingHall
?????...kibbleart@optusnet.com.au

**Visual Art
At Arncliffe**



SGAS MEMBERS
10% off
art materials
15% off framing

QUALITY FRAMING & ART SUPPLIES

2 Terry Street, Arncliffe
Mon - Fri 8.30am - 4.30pm
Sat 10am - 2pm

Phone: 9567 2355 E: shop@vaa.com.au



**YVONNE FERGUSON
ART CLASSES**
Workshop once a month
Mon & Tues 10am - 12.30 \$30
Private Tuition per hour \$30

ALL MEDIUMS

Home Studio Sans Souci
yferguson46@gmail.com

TUITION

**ART
STUDIO & GALLERY**

Art & Photography Exhibitions
Art Classes • Workshops • Demonstrations

Denise Kassis
Phone 0420 740 552
Email: denise@kassis.com.au
Facebook: *Art on Burraneer*

Unit 4/199-201 Burraneer Bay Rd
Caringbah South 2229

DON KIBBLE text only 0427 472 237

Ramsgate Life Saving Hall,
RAMSGATE BEACH
Wed. 10.30 - 1.00pm \$30

YVONNE FERGUSON 9529 5536

Home Studio 130 The Promenade SANS SOUCI
Mon. & Tues. 10am - 12.30 \$30
Private Tuition \$30 per hour

ROS PSAKIS 9587 8857

Syd Frost Mem. Hall, Hawthorne St. RAMSGATE
Wed. 10.30-2.30pm. W/shop 1st Wed. 10.30 - 2.30 \$40
rospsakis@optusnet.com.au www.rospsakis.com

DENISE KASSIS 0420 740 552

Home Studio CARINGBAH
Tues. and Thurs. 10.30am - 12.30pm
Mixed Media \$40.

MARION CHAPMAN 0411 665 443

Home studio, SYLVANIA
Kids: drawing & painting / Adults: watercolour
Watercolour supplies selected for you
www.marionchapman.com for more details