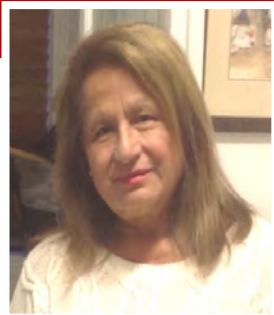




Paint 'n' Palette Newsletter #461

October 2024



**President
Jan Schuster-Callus**

From the **PRESIDENT'S** desk

We have had some interesting events so far this month. With Angela's demo, which was very successful and comments were, it was very informative, interesting and fun learning a new technique with hands on. It was great to see guests from our wonderful sister society Oatley 101 there.

Jill and I attended Rod Byatt's Life Drawing at the Hurstville Museum & Gallery last Friday Night, the model wearing a fabulous hat and clothing creating some fantastic poses. It was a combination of SGAS and Georges River Council to fit in with their latest exhibition 1X4.

Saturday morning for our 'Kiss the Barista' was a great way to have a chat and meet up with fellow members. We might have the next one outside as the

weather gets warmer. Remember to mark your calendar for future dates.

This month I'd like to send out a big 'THANK YOU' to our PnP Editor, *Julie*, she puts up with a lot of us changing information constantly with such patience. Another 'behind the scenes' is our Membership Officer '*Jani*', also dealing with constant updates to make sure everyone gets our newsletters and information. Something we often forget and take for granted is that our members are volunteers, much needed to keep our Art Society going strong. Always treat them with respect and kindness.



With our Annual 80th Art Show coming up in November, we will need volunteers for all aspects of the exhibition. To make it a success as its always has been, we need your help.

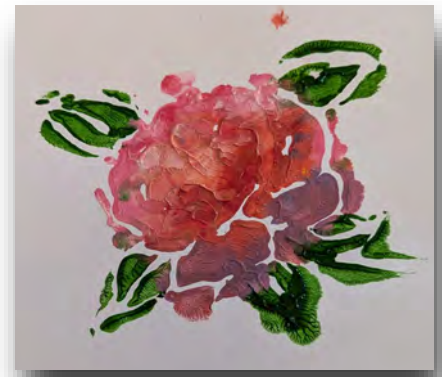
For the bump in/bump out, hanging works and clean up when picking up your paintings, an extra few minutes to help would be much appreciated. Remember it's YOUR Art Society and YOUR exhibition. The form will be coming soon and please check it carefully as there has been a few changes in the Sections and The Framing conditions.

Kind Regards and have a wonderful month.
Jan Schuster-Callus



OCTOBER CALENDAR OF EVENTS

DAY:	DATE	ACTIVITY	VENUE	TIME	GUEST ARTIST/ CO-ORDINATOR
TUESDAY	1 ST OCT	SKETCHABILITY	KOGARAH	2PM	DON KIBBLE
THURSDAY	3 RD OCT	CRITIQUE	RAMSGATE	6.30PM	PAUL MC CARTHY
SATURDAY	5 TH OCT	MARKET DAY	KINGSGROVE	10AM- 3PM	WREN CRAW
TUESDAY	8 TH OCT	ARTABILITY	KOGARAH	2PM	ANGELA ILIADIS
THURSDAY	10 TH OCT	PORTRAITURE	KOGARAH	6.30PM	WREN CRAW
TUESDAY	15 TH OCT	ARTABILITY	KOGARAH	2PM	ANGELA ILIADIS
THURSDAY	17 TH OCT	DEMONSTRATION	KOGARAH	6.30PM	PAUL MC CARTHY
TUESDAY	22 ND OCT	SKETCHABILITY	KOGARAH	2PM	DON KIBBLE
THURSDAY	24 TH OCT	LIFE DRAWING	KOGARAH	10PM	WREN CRAW
THURSDAY	24 TH OCT	WATERCOLOUR	RAMSGATE	6.30PM	ROD BYATT
SUNDAY	27 TH OCT	PLEIN AIR	KOGARAH PARK	10AM	DON KIBBLE



ArtAbility, 10th September, was fun painting on meat trays and carving into meat trays to create designs for printmaking. Some participants were drawing and painting using watercolour or acrylic paints.

NEW MEMBERS

September:

Harry Tolitsas

August:

Effie Fox & Martina Dittmer-Flachskampf

Oatley 101 Annual Members Exhibition

Four of our members won awards

Section 3

WINNER -

JAN SCHUSTER-CALLUS "Power of the Tree"

HIGHLY COMMENDED -

ANGELA ILIADIS "Ink-Ling"

Section 4

WINNER -

JOE GREEN "Doorway to Imagination"

HIGHLY COMMENDED -

MARLENE WEAVER "Shirley Hagarty"

If you know of any award winners please notify us so that we can acknowledge their achievements

IT'S TIME

A reminder to enter your Artworks for our Annual Art show on the first weekend in

***November** at the Kogarah School of Arts to celebrate our*

80th Birthday.

Entry forms and details Are NOW online



Our second Thursday of the month portraiture evening at Kogarah School of Arts was once again a great success seeing 2 new members to the group. It's great to see the different techniques and styles our artists have, both beginners and experienced talented members.



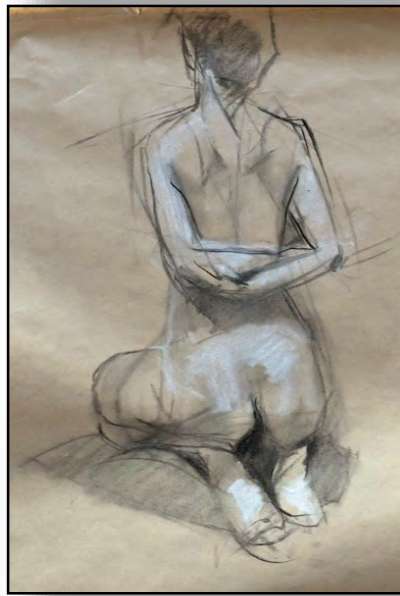
Our September critique guest judge, Angela Iliadis, gave lots of positive suggestions for our members artworks. Angela's vast experience and expertise showed

through. The People's Choice Award went to Jenny Wassell for her beautiful Plein Air artwork of Tempe Park. Congratulations Jenny and thank you Angela.

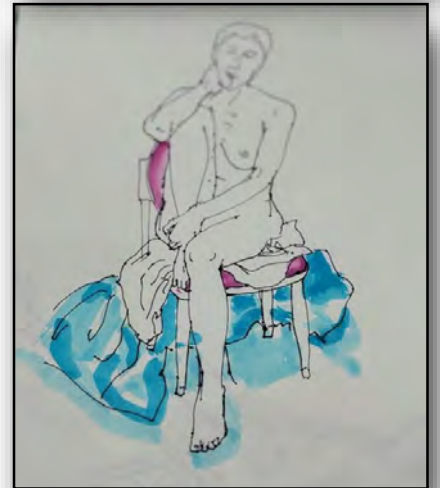
Jenny Wassell and Angela Iliadis



Life Drawing



Our members once again enjoyed Life Drawing at the School of Arts. The times for the poses start with 1minute sketches and work up to 2 fifteen minute poses. This allows warming up to get some great artworks. An enjoyable way to spend a couple of hours doing what you love.



Portraiture



Celebrating
80
Years



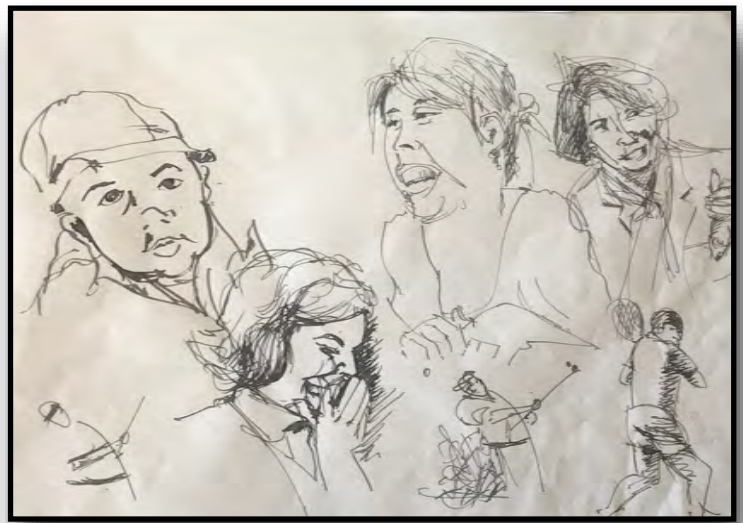
Our subject this month was the female portrait. We reviewed face proportions in our under drawing and considered both warm and cool colours for lit and shaded parts of the face, looking closely at the work of watercolourist Charles Reid. In our October session we will look at flowers and leaves up close.

LAST MONTH'S



SKETCHABILITY ... first and last Tuesdays of the month 2 to 4pm.

Experience SGRAFFITO, and other imaging media creating pseudo sgraffito. The fun way to make images talk. You can do this on your own, but it is more interesting with a friend.



Sgraffito is an artistic or decorative technique of scratching through a coating on a hard surface to reveal parts of another underlying coating which is in .

Last month's Demonstration By Artist - Angela Iliadis



It was a great turnout on Thursday evening to see Angela's demonstration using oil paint and cold wax medium. Her works seek to use lines, colour and other elements of art and principals of design to create artworks that evoke feelings. She is inspired by nature, colour, lines and the creative process.

WHAT'S HAPPENING



Combined Art Societies of Sydney Inc.



"Art in the Country" with Tutor, Jenny Macnaughton

****No 2** 4-DAY WATERCOLOUR PLEIN AIR/STUDIO WORKSHOP AT KANDOS
Or 1-DAY ONLY (Sunday)**

Prepare to embark on a whimsical journey in Kandos, where breathtaking landscapes await your artistic touch. Picture yourself surrounded by the serene beauty of pastoral vistas, while the towering, awe-inspiring cliffs of the renowned Wollemi National Park stand majestically in the distance. In this enchanting setting, you'll receive expert guidance, transforming your sketches into masterpieces with the delicate strokes of watercolours. Let your creativity flow in this picturesque haven, where nature's wonders and artistic inspiration seamlessly blend.

Dates: 7, 8, 9 and 10 November 2024
Times: 9am to 3.30pm daily
Price: \$440 (4 day) or \$110 for 1 day only (10.11.24)
Address: 72 Buchanan Street, Kandos



Price is for workshop only (Includes tuition, morning-tea and use of the facility. Lunch and accommodation is not included) Students will need to book their own accommodation.

Email combinedsocieties@yahoo.com.au to receive the Booking Form for this workshop.

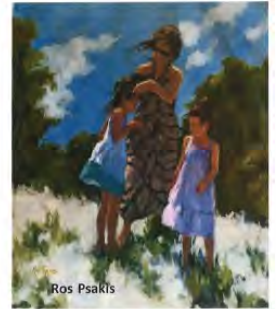


Celebrating
80
Years

STGEORGE ART SOCIETY INC.
FOR THE ENJOYMENT OF ALL

The 2024 Annual Art Exhibition 1st, 2nd and 3rd November

Kogarah School of Arts
Cnr Queens Ave & Bowns Rd
Kogarah



Feature Artist is Ros Psakis

Opening Night Friday 1st November
Starting at 6.30pm and Awards 7.30pm

Exhibition open to public
Saturday 2nd and Sunday 3rd 10.00am to 4.00pm

Contact: Jan 0410690607

Email: st.george.art.society@gmail.com



**IT IS TIME TO GET YOUR ENTRIES IN FOR THE KOGARAH ART EXHIBITION
FORMS OUR NOW ONLINE**



Watch this space

SOCIAL NEWS



Morning Tea catch up.
Venue to be advised
Saturday 23rd November

Christmas Party
Thursday 5th December
More Details to follow

This month's Guest Artist Paul McCarthy



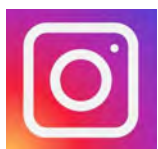
Paul is an artist who seamlessly integrates colour, light and form in his artworks. He is proficient in all mediums, watercolours, pastels, oils, acrylics, pencil and ink, producing beautiful artwork that is displayed in art galleries both in Australia and all over the world. His works are currently on display at the Rochfort Art Gallery in Sydney. His work is vibrant, exciting and displays his unique artistic ability as well as his perception of nature and his surrounds is something to behold. Paul's plein-air vision of the bush is one of energized



colour. Born in Sydney in 1966 has been painting for many years, his landscapes

combine Fauvism, Impressionism and Contemporary Abstraction which is a unique ability.

**Supported by Georges River Council's Venue Hire
Grants program**



STGEORGE Art SOCIETY INC
FOR THE ENCOURAGEMENT OF ART

PO BOX 16 BARDWELL PARK NSW 2207

PRESIDENT: Jan Schuster-Callus T: 0410 690607



E: st.george.art.society@gmail.com W: www.stgeorgeartsociety.com.au

Editor: Julie Agnew