

SGAS SPONSORS



McGrath

RamsgateRSL



Supported by Georges River Council's Venue Hire Grants program



PO BOX 4133 KOGARAH BAY NSW 2218
PRESIDENT: Jan Schuster-Callus T: 0410 690607



E: st.george.art.society@gmail.com W: www.stgeorgeartsociety.com.au Editor: Julie Agnew



Paint 'n' Palette Newsletter #464 JUNE 2025



From the PRESIDENT'S desk



President
Jan Schuster-Callus

Our hard-working committee has been busy again this month, and things are getting done to make the Tempe House ArtReach'25 an exciting event for 10 days.

Our Opening Night Event has a jazz band before and after our Opening by Ross Berry, the Historian of Tempe House.

I am really happy with so many entering, as you all know, we count on our members to make these events a success. Even if you haven't entered this year, please come along and enjoy the evening, there are some really good eating restaurants in Discovery Point after having a glass of bubbly, listening to some good jazz with friends.

We are so lucky to have this

beautiful historical home to have our yearly art exhibition. When you do come, be sure to use the apps to read the history.

This past few week has/having had a few art exhibitions on. Oyster Bay, Oatley 101 and Hazelhurst with the Southern Printmakers, our members are also members or have display work. PLEASE, if you have won any awards or are having an exhibition, let us know.

The Southern Printmakers exhibition at Broadhurst Gallery is really worth visiting, not only because I am a member, but as you know, I am a huge advocate of Printmaking. It's a beautiful art. The process of printmaking is believed to have been invented by **Daniel Hopfer** in the sixteenth

century in Germany. **Hopfer** was a craftsman who decorated armour in this way and applied the method to printmaking, using iron plates (many of which still exist). The advances in Chemistry in the 17th century tools and techniques really expanded the possibilities of artists.

Too many people believe when you say a 'print' they think it's printed from a printer or Officeworks. A proper print takes time and patience to create with much thought and artistic ability.

TIME again soon for renewing membership, doesn't the year goes by fast. Information will be in the PnP.

JUNE 2025 CALENDAR OF EVENTS

DAY:	DATE	ACTIVITY	VENUE	TIME	GUEST ARTIST/ CO-ORDINATOR
TUESDAY	3 RD JUNE	SKETCHABILITY	KOGARAH	2PM	DON/JILLIAN
WEDNESDAY	4 TH JUNE	BUMP IN	TEMPE HOUSE	10AM TO 12PM	JAN
THURSDAY	5 TH JUNE	CRITIQUE	RAMSGATE	6.30PM	ANGELA ILIADIS
SATURDAY	7 TH JUNE	EXHIBITION OPENING	TEMPE HOUSE	4PM	JAN
TUESDAY	10 TH JUNE	ARTABILITY	KOGARAH	2PM	ANGELA ILIADIS
THURSDAY	12 TH JUNE	PORTRAITURE	KOGARAH	6.30PM	JILLIAN JESSEN
SUNDAY	15 TH JUNE	BUMP OUT	TEMPE HOUSE	3PM TO 5PM	JAN
TUESDAY	17 TH JUNE	ARTABILITY	KOGARAH	2PM	ANGELA ILIADIS
THURSDAY	19 TH JUNE	DEMONSTRATION	KOGARAH	6.30PM	DENISE KASSIS
TUESDAY	24 TH JUNE	SKETCHABILITY	KOGARAH	2PM	DON/JILLIAN
THURSDAY	26 TH JUNE	LIFE DRAWING	KOGARAH	10AM	JAN/MIRNA
THURSDAY	26 TH JUNE	WATERCOLOUR	RAMSGATE	6.30PM	ROD BYATT



DEBORAH LEE

Adelaide and surrounds had its driest Summer since 2018-19 followed by a lower than average rainfall in Autumn. When I arrived at my usual stay in Montacute, a cherry and fruit growing region in the NE Hills area of Adelaide in early May, I was shocked at the transformation. It was like leaving Sydney in brilliant technicolour, to step into a sepia landscape photograph of brown and straw tones. (Sydney's last summer had 322.6mm rainfall compared to Adelaide's 21.2mm).

Driving up the track to the farmhouse, the only green



Picture: Montacute herb garden, 2020 - Acrylic on stretched canvas

seemed to be scrubby weeds such as blackberry, spent agapanthus, and the leaves of eucalypt trees although some of the younger trees were looking quite unhealthy due to the dryness. The visiting kangaroos had departed as any blades of grass had been eaten or withered. The local spring had dried up.

My herb garden at the back door which was once so lush over the years, now only contains a lonely rosemary bush and a leggy geranium plant. The bird bath is continually knocked over by thirsty possums. Quite a sad scene.

Driving 700 kms from there to Port Lincoln National Park on Eyre Peninsula, 2 peninsulas to the west, the landscape was even drier, the wheat farmers finding



Montacute dirt track to the farmhouse, May 2025- Acrylic on Canvas board.



Fishermans Point Campsite, Port Lincoln National Park – pen and watercolour sketch, in a 12 x 12cm sketchbook, en plein air.

crop planting a challenge this year. At least the waters at Port Lincoln National Park were still a beautiful azure blue, without algal blooms. Managed to catch some fish for dinner one afternoon on the ocean beach. Such a dry but beautiful vast landscape.

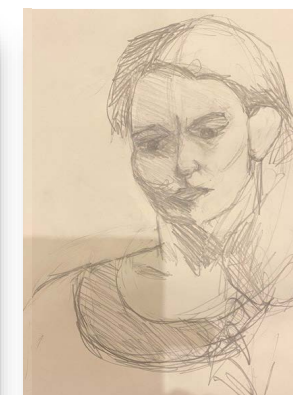


Picture: Fishy catch, Ocean Beach, Port Lincoln National Park – pencil, pen and watercolour sketch, in a 12 x 12cm sketchbook, en plein air

We invite you to share your travel sketches and their stories and we hope to include some of these in future monthly Paint 'n Palette newsletters.

Please include a short explanation of the location, when you visited, what this work meant to you, how you executed this work- e.g. in situ/ or later, materials used. We look forward to your contributions.

**Please send articles to Deborah Lee
deborahlee12@optusnet.com.au**



Louise was our delightful model and members really did some amazing work in all genres of media. The bad weather did not deter attendance which is so satisfying for the Co-Ordinators of that particular event. All members are welcome to improve their portraiture skills with a live model. ADVISING!!! David is our very interesting model for 12th June portraiture evening, so hope members can attend.



It is such a joy to see so much creativity in the ArtAbility sessions. Everyone produces their own artwork using whatever media they want. Participants are free to experiment and ask for guidance and advise. It is such a joy to receive feedback from one of your students saying how much they enjoy the class and appreciate the guidance. Thank you to all who attend. Angela.



Thanks to 'The Shire NEW HORIZONS JAZZ BAND', an 8-piece ensemble will be performing a range of recognisable jazz standards from the 1930s through 1950s at TEMPE HOUSE ARTREACH'25



Rod's watercolour class was all about "Bookends", "Prison Bars", "The Path". we looked at the standard compositional formulas for trees in landscape painting.

This month's Demonstration by Artist, Denise Kassis

For as long as I can remember, I've always had a passion for Art, Craft and Photography. I attended Business College, studying Colour and Design; and I've pursued many art & craft courses, including a course for my most renowned technique- Encaustic Art, which involves melting coloured bees wax onto a hot iron and painting it onto coated paper to create stunning abstracts.

Art is and has always been my saviour through tough times, and I made it my life goal to share this gift with as many people as possible by using art as a catalyst for therapy in my 'Art as Therapy' classes and group workshops.

While helping others through art, I have also pursued my own personal ambitions:

- Multiple awards for various mediums of art.
- Holding art and photography exhibitions from my studio gallery at Caringbah South, Sydney Australia.
- My paintings are featured at The Sutherland Hospital, Sydney.
- Donated paintings to raise money for various charities including Mental Health, Cancer Research and for young ladies doing it tough in Granda, Africa.

I have exhibited in many exhibitions including the prestigious Parliament House Sydney. As featured artist and also Hazelhurst Gallery in Sutherland Shire.

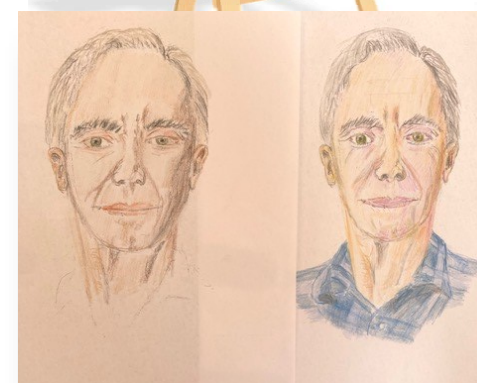


Facebook: Art for the Soul
Instagram: denisekk_gallery

May Demonstration



Jane Wray's pastel demonstration was amazing. Jane spoke about the different textures of pastels, recommending artists quality, paper to use and techniques on how she creates beautiful artworks. Jane's finished urns were so beautiful.



Everyone had an enjoyable lesson with great results. A new member joined us as well and loved it, which is great.

This month's Critique by Artist, Angela Iliadis



Angela Iliadis is an award-winning artist and an educator living in Sydney, Australia. Her works can be found in Australia and overseas. Angela has a master of Education and a Master of Art and she works across a range of media and a variety of approaches, working predominantly in painting and drawing but also venturing into digital photo art and collage.

Her works seek to use lines, colour and other elements of art and principals of design to create artworks that evoke feelings. She is inspired by nature, colour, lines and the creative process.

Her background and continued work in art education informs much of her expanded practice, focusing on teaching as a form of socially engaged art. She is interested in the relationship between approaches to making.

Mobile 0412 720 993

Email: angela_iliadis@hotmail.com



Our model this month had some extremely athletic poses. One consists of holding a push-up pose for a minute. One cheeky member asked if we could have it for our 15-minute pose. It's always great when a model goes one step further in his poses.



May morning tea



Attendees at Morning Tea were Roslyn , Marguerite, Grace, Karen, Lorraine, Collette, Yvonne and Mirna. It was nice to see a great attendance at the St George Motor Boat Club

**There will be
NO Morning Tea
or Plein Air
this month (June)**

Art for the Soul

Gallery - Studio

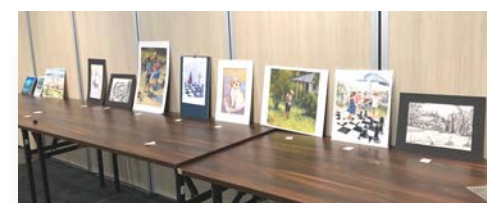
Art and photography sales



Contact: Denise for opening times and for appointments, Caringbah South.
Denise Kassis Artist & Tutor
0420 740 552
Email: denise@kassis.com.au
Facebook: Art for the Soul
Instagram: denisekk_gallery



Jane Wray was our guest this month. With the bad weather on the night it kept a lot of our members home, but the ones that did venture out had a great critique with some very interesting insights. Art of the Month was Ros and our People's Choice was Gracie. Both very well deserving.



These are sketches by members who have never drawn heads before and I am very impressed with results. Portraiture and head stuff measurements are a big challenge to learners. Lots of fun and appreciation for the passing of Knowledge.



STGEORGE **Art** SOCIETY

"ArtReach'25"

Art Exhibition

at Historic Tempe House

Reaching others through art

To be opened by
Ross Berry, Historian - Tempe House Estate

FREE ENTRY

Official Opening Sat 7th June 4pm

Music by "The Shire New Horizons Jazz Band"

Refreshments provided

Thu 5th to Sun 15th June

Open daily from 10am to 5pm

1 Princes Highway, Wolli Creek

Contact Jan for more details: st.george.art.society@gmail.com or 0410 690 607