



# Paint 'n' Palette Newsletter #471

## APRIL 2026



**President**  
**Jan Schuster-Callus**

### From the **PRESIDENT'S** desk

March has gone by so fast, with so much happening.

We had the 'Seniors Expo' with a few of our committee members in attendance, Jill, Mirna, Debbie and I. Always good fun and a chance to meet up with other groups and exchange ideas.

Our Oatley RSL Sub-Branch Anzac Day is coming up and we hope everyone is considering entering some artworks. It will be a big day in Oatley with the opening of its Sub Branch Hall after a mural has been painted and some renovations have been finished.

For Ramsgate RSL Anzac, we will be having our Critique Night for any new ANZAC artworks to be considered for Ramsgate Displayed at their Dinner and a week before ANZAC day, on the Sunday, these will be delivered to Oatley for the rest of the exhibition. Sounds complicated?? email or ring me if confused.

We are very lucky to have two RSL's inviting us to exhibit to honour our Veterans and their families.

Waiting for confirmation for ArtReach26, but that will hopefully come for June.

I loved our workshop with

Tony Belobrajdic. Since then, I can't stop using my Sanguine water-based crayon and graphic stick. Mostly, I like it for portraits and have been trying it out on brown paper. I bought a square brown scrapbook album at K-Mart for \$5 and have been doing small portraits ever since, as well as on watercolour paper. Tony is an amazing artist, and his work is in the Argyle Gallery in the Rocks. He also kindly agreed to exhibit a painting for our Oatley RSL ANZAC Day exhibition this year.

## APRIL 2026 CALENDAR OF EVENTS

DAY:	DATE	ACTIVITY	VENUE	TIME	GUEST ARTIST/ CO-ORDINATOR
THURSDAY	2 <sup>ND</sup> APRIL	CRITIQUE	RAMSGATE	6.30PM	JAN SCHUSTER-CALLUS
TUESDAY	7 <sup>TH</sup> APRIL	SKETCHABILITY	KOGARAH	2.00PM	DON & JILLIAN
THURSDAY	9 <sup>TH</sup> APRIL	PORTRAITURE	KOGARAH	6.30PM	JILLIAN JESSEN
TUESDAY	14 <sup>TH</sup> APRIL	ARTABILITY	KOGARAH	2.00PM	ANGELA ILIADIS
THURSDAY	16 <sup>TH</sup> APRIL	DEMONSTRATION	KOGARAH	6.30PM	PEGGY ANNABEL
TUESDAY	21 <sup>ST</sup> APRIL	ARTABILITY	KOGARAH	2.00PM	ANGELA ILIADIS
THURSDAY	23 <sup>RD</sup> APRIL	LIFE DRAWING	KOGARAH	10.00AM	JAN SCHUSTER-CALLUS
THURSDAY	23 <sup>RD</sup> APRIL	WATERCOLOUR	GYMEA TRADIES	6.00PM	TRISH MACLACHLAN
FRIDAY	24 <sup>TH</sup> APRIL	BUMP IN	OATLEY RSL	10.00AM	JAN SCHUSTER-CALLUS
TUESDAY	28 <sup>TH</sup> APRIL	SKETCHABILITY	KOGARAH	2.00PM	DON & JILLIAN
WEDNESDAY	29 <sup>TH</sup> APRIL	BUMP OUT	OATLEY RSL	10AM-12.00PM	JAN SCHUSTER-CALLUS

# ANZAC ART EXHIBITION

**Oatley RSL Sub - Branch and the  
St George Art Society's Artists  
are exhibiting a very special display of  
artwork to remember our Veterans.**



**Dates:**

**Friday 24th April: 1 - 4pm**

**Saturday 25th April: 8am - 4pm (Anzac Day), Sunday 26th  
and Tuesday 28th: 10am - 4pm**

**WHERE: Oatley RSL Sub-Branch Hall,  
next door to Oatley RSL Club**

# Seniors Week EXPO

Our committee members, Jan, Jill, Mirna and Debbie all enjoyed the day with painting and chatting. Music and a Sausage Sizzle. Many visitors commented on the artwork Debbie displayed. Some new alliances were formed, and we have the 'Open Day at Carss Cottage Museum' planned on 19<sup>th</sup> April with the Kogarah Historical Society. If interested, please contact Jan or the Historical Society; a free afternoon tea will be provided. Bring your sketch book.

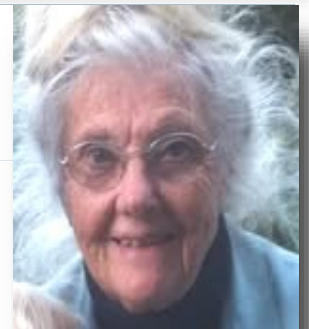


## This month's Guest Artist Demonstration Peggy Annabel

This month's guest artist Peggy Annabel was unable to be with us last month due to ill health.

Peggy is back on deck and for this month, she will talk all about being a sketcher. Peggy will explain the purpose and benefits

and methods of observational sketching and to insure that the books show the varieties of methods within the World and Urban Sketchers Creed. Peggy abides by the World Urban Sketchers Creed so that we sketch appropriately.



**Don't forget to bring your sketchbook and basic sketching tools.**

## Sketching at Carrs Park

*"We are sending an invitation to any artists who would like to come and paint or draw for an afternoon at Carss Cottage Open House on **Sunday 19th April, 1-4pm.***

*We hope to have afternoon tea, bookstall, music and the Museum will be open to discover. We also have a fashion exhibition through the ages from the mid 1800s and also advertising from that time till 1990s for all those old advertising artists.*

*If you would like to come, could you reply to me [wagzarian@yahoo.com](mailto:wagzarian@yahoo.com) for numbers and we are giving all artists a FREE afternoon tea. We will open our gates to park inside and also parking in the nearby carpark."*

# March Workshop by Tony Belobrajdic



Missing Tony Belobrajdic's workshop, you really missed an opportunity to get back to basics. Using tonal sanguine and graphic water-based products seemed simple, but it really is a classic expressive drawing technique. Tony demonstrated the need to have the darks to celebrate the lights. Using tonal work you find the softness and warmth to an artwork, sanguine in a portrait feels like it's a natural tool.



## Art for the Soul Gallery - Studio

### Art and photography sales

Upcoming art as therapy group workshops

Multi award winning artist and tutor

Denise Kassis 0420 740 552



*God's gift*

By

Photographer Susan Williams (née Kearney)

Contact: Denise for opening times and for appointments,  
4/199-201 Burraneer Bay Road Caringbah South 2229

Email: [denise@kassis.com.au](mailto:denise@kassis.com.au)

Facebook: Art for the Soul Instagram: [denisekk\\_gallery](https://www.instagram.com/denisekk_gallery)

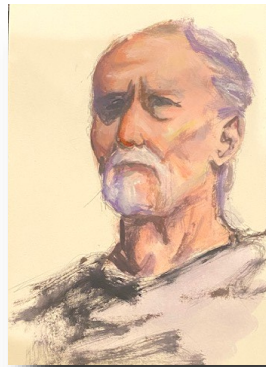
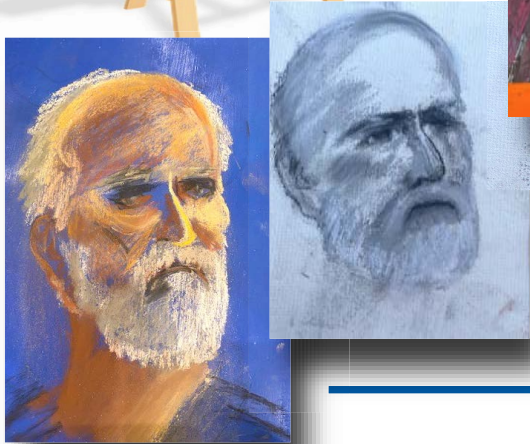
## Morning Tea



It's always nice to see our members catching up over coffee and sometimes breakfast to chat about experiences and artistic ideas.

Due to a busy schedule with our Anzac activities our Morning tea will not be happening in April but will resume again on Saturday 30th May.

# Portraiture



Great work by our clever artists of Don Kibble. He is a great subject who inspired us all. There was a variety of media used with such great results. Congratulations to all those who attended.

# Critique



Our guest artist for the March Critique evening was Peggy Annabel. Peggy, from Shire sketchers, gave her feedback based on her knowledge and personal preferences. Jim West was Peggy's choice for artist of the month talking about the love that showed in his painting of his daughter. Peter Michalandos received the People's Choice Award for his painting for the Oatley Anzac Exhibition



For our Monthly Life Drawing Class, we made some changes. Using the stage and the stairs, our model had some creative poses that were exciting to draw. Our female model was a pre-Raphaelite dream. The time limit wasn't enough for our drawings to do her justice.

# Life Drawing

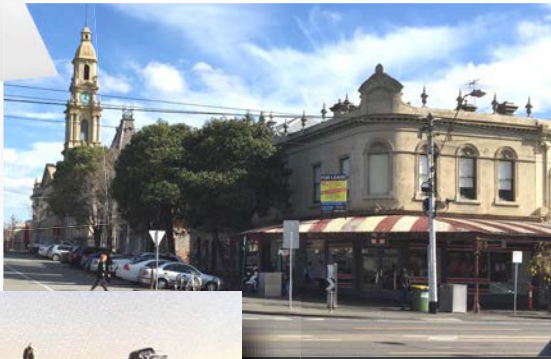


## ArtAbility



Some of the students were preparing for the Anzac Day Exhibition. Others worked on their individual projects. It was a lovely social gathering.

## WATERCOLOUR



Trish's watercolour class for March wasn't for the faint hearted. The weather was dreadful. Some got there but couldn't even get out of their car due to the torrential rain. Despite all of this we had a super informative 3 hour lesson. So many tricks of the trade. Trish is such a master of the watercolour brush. So much to practice and achieve.



## March Demonstration by Angela Iliadis

Demonstration of some techniques using unconventional materials on loose canvas using oil paint mixed with cold wax medium.

Everyone was invited to experiment with the materials and oil paint mixed cold wax medium to create their own artwork with some great results.



# Tempe House Exhibition

**12,13,14 June and 18,19, 20, 21st June**  
**1 Princes Hwy, Wolli Creek**



Staffing is required, so anybody entering a painting is required to attend for a minimum of one session on the staffing roster.

## Key Dates:

### Bump in:

Thursday 11th June

### Bump Out:

Sunday 21st June

### Opening

Saturday 13th June

### Exhibition:

Friday 12,13,14 June  
and 18,19,20, 21st June



**Information on how to enter will follow**

# SGAS SPONSORS



RamsgateRSL



Supported by Georges River Council's Venue Hire Grants program



**STGEORGE Art SOCIETY INC**  
FOR THE ENCOURAGEMENT OF ART

PO BOX 4133 KOGARAH BAY NSW 2218  
PRESIDENT: Jan Schuster-Callus T: 0410 690607



E: [st.george.art.society@gmail.com](mailto:st.george.art.society@gmail.com) W: [www.stgeorgeartsociety.com.au](http://www.stgeorgeartsociety.com.au) Editor: Julie Agnew