



Paint 'n' Palette Newsletter #473

JUNE 2026



**President
Jan Schuster-Callus**



From the **PRESIDENT'S** desk

May went fast, starting with Critique by the lovely Jacqueline Burgess, and again as our Demonstrator. What a small world it is. Jacqueline's husband was a childhood friend of my gorgeous stepson. I had many stories to tell of their teenage years. Both nights were delightful and full of interesting information with more info on the nights included in this issue.

A few of us were at the very popular **Oyster Bay Art and Crafts Show** on Friday night, Oyster Bay has through the years been very supportive to our artists and as usual it was a fun night.

I was very privileged to be a guest speaker as a representative of SGAS at Kogarah's James Clive Gallery for the **"Echoes of Italy in Paint and Sketch"** from the **RedSugar** group from



Hurstville. If you get a chance to stop by, they have some wonderful works of their visit to Italy, it's good to support our other Art Groups.

Sadly, I hate to mention that we need to have more members for our Life

(continued on page 2)



JUNE 2026 CALENDAR OF EVENTS

| DAY: | DATE | ACTIVITY | VENUE | TIME | GUEST ARTIST/ CO-ORDINATOR |
|----------|-----------------------|---------------|-------------|---------|-------------------------------|
| TUESDAY | 2 ND JUNE | SKETCHABILITY | KOGARAH | 2.00PM | DON & JILLIAN |
| THURSDAY | 4 TH JUNE | CRITIQUE | RAMSGATE | 6.30PM | FRIENDLY |
| TUESDAY | 9 TH JUNE | ARTABILITY | KOGARAH | 2.00PM | ANGELA ILIADIS |
| THURSDAY | 11 TH JUNE | BUMP IN | TEMPE HOUSE | 10.00AM | JAN SCHUSTER-CALLUS |
| THURSDAY | 11 TH JUNE | PORTRAITURE | KOGARAH | 6.30PM | JILLIAN JESSEN |
| SATURDAY | 13 TH JUNE | OPENING | TEMPE HOUSE | 3.00PM | JAN SCHUSTER-CALLUS |
| TUESDAY | 16 TH JUNE | ARTABILITY | KOGARAH | 2.00PM | ANGELA ILIADIS |
| THURSDAY | 18 TH JUNE | DEMONSTRATION | KOGARAH | 6.30PM | TBA |
| SUNDAY | 21 ST JUNE | BUMP OUT | TEMPE HOUSE | 4.00PM | JAN SCHUSTER-CALLUS |
| TUESDAY | 23 RD JUNE | ARTABILITY | KOGARAH | 2.00PM | ANGELA ILIADIS |
| THURSDAY | 25 TH JUNE | LIFE DRAWING | KOGARAH | 10.00AM | JAN SCHUSTER-CALLUS |
| THURSDAY | 25 TH JUNE | WATERCOLOUR | RAMSGATE | 6.00PM | TRISH MACLACHLAN |
| TUESDAY | 30 TH JUNE | SKETCHABILITY | KOGARAH | 2.00PM | DON & JILLIAN |



Drawing Class, it has dropped off this year and to continue, we need more attendance. We have been thinking of adding another group such as Still Life upstairs and Life Drawing downstairs. To take advantage of our time at the School of Arts. Please feel free to email me with any ideas. Our Life Drawing is a very reasonable priced drawing session with some fantastic models, it would be a shame to lose out.

TEMPE HOUSE 'ARTREACH'26 is coming up soon, we booked the jazz band and, our Opening Speaker is Ms Alix Verge the Great Great Granddaughter of the man who designed Tempe House as well as

some of the most beautiful historical homes in Sydney, John Verge. Get your entries in soon and work out your roster times, remember we need our volunteers to keep it running. This year we also will have some crafts, books, jewelry and cards. Sign up for a table.

Phil McKay's 'Recent Paintings' is having a very successful exhibition at The Corner Gallery, Stanmore, on until Tuesday 2nd June if you get a chance to see it. Phil a long time member of SGAS and his creative focal point is structures of the landscape, both urban and rural.



Phil McKay's exhibition at Corner Stone Gallery

Oyster Bay Arts & Crafts opening



Oyster Bay Arts & Crafts opening with Jill, Jan and Marlene

MONTHLY ACTIVITIES

- 1st Thursday Evening - Art Critique 6.30pm Ramsgate RSL**
Members may bring 2 unframed artworks for appraisal by a guest artist
- 2nd Thursday - Portraiture 6.30pm Kogarah School of Arts**
Professional model. Bring your own art materials - easels & tables supplied
- Every Tuesday 2.00pm - 4.00pm Kogarah School of Arts**
SketchAbility/ArtAbility
Series of art classes led by experienced artists
- 3rd Thursday Evening - Demonstration 6.30pm Kogarah School of Arts**
Invited artists demonstrate their technique and expertise.
- 4th Thursday morning - Life drawing 10am - 12pm Kogarah School of Arts**
Professional model. Bring you own art materials - easels & tables supplied.
- 4th Thursday Evening - Watercolour Class 6.30pm Ramsgate RSL**
Instruction and guidance by an experienced Tutor.
Bring your own art materials.
Members meet for the activities listed above at:
Kogarah School of Arts, Cnr Queens Ave & Bowns Rd Kogarah NSW 2217 and
Ramsgate RSL, Cnr Ramsgate Road and Chuter Avenue Sans Souci NSW 2217
Contact: Jillian 0407 066 621

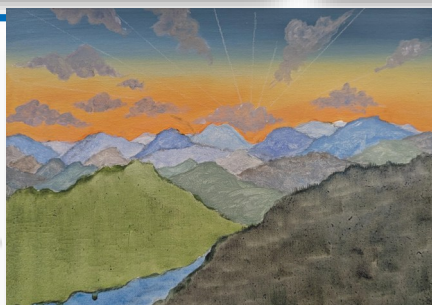
E st.george.art.society@gmail.com

W: www.stgeorgeartsociety.com.au

Visitors are welcome

May Demonstration

Our May demonstration was given by Jacqueline Burgess. Jacqueline demonstrated, in acrylic paints, the art of creating a spectacular landscape. We loved her free flowing dialogue as she shared her knowledge and passion for her craft. Jacqueline graciously donated her painting as a lucky door prize. Jim was the lucky recipient. Another great evening at the school of Arts.



We welcomed a new student who fitted in very well. She produced a lovely sailing boat which is not finished yet. Jillian continued working on her mixed media colourful cards on watercolour paper. Norma did a female figure all dressed up as a ballet dancer using fabulous colours. Liliana worked on a sunset landscape and Anne also produced a lovely landscape. We all had a lovely afternoon filled with laughter, enjoyable conversation and great art!

Morning Tea

Our monthly morning tea proved once more to be a great opportunity for a group of friends with common interests, to share life experiences and have a laugh.



Morning Tea

Morning Tea will not be on in June Due to the Tempe House Exhibition





A St George Art Society at Tempe House **“ArtReach`26”**

*The heritage listed Tempe House is the perfect setting for art exhibitions.
Built from 1833 -1836, it was designed to accommodate
Alexander Brodie Spark’s extensive art Collection.*

*Members of the St George Art Society will be exhibiting their artworks
at this beautiful location from:*

Friday 12th June - Sunday 21st June 2026

Closed Monday 15th June to Thursday 17th June

To be opened by Ms Alix Verge

*Gt Gt Granddaughter of John Verge who designed Tempe House, Elizabeth Bay House,
Camden Park, Rockwall, Wivenhoe, Tusculum*

Saturday, 13th June,

3:00pm

Entertainment by





Watercolour class for May by Trish McLaughlan was a landscape painting, including water reflections. Our group all came away with a great finished work. Can't wait to see what we'll be doing next month where we will be back at Ramsgate RSL.

**Tempe House Entries are due by
8th July
Don't miss out
Get your entries in ASAP!**



Art for the Soul Gallery - Studio

Art and photography sales

Upcoming art as therapy group workshops

Multi award winning artist and tutor

Denise Kassis 0420 740 552



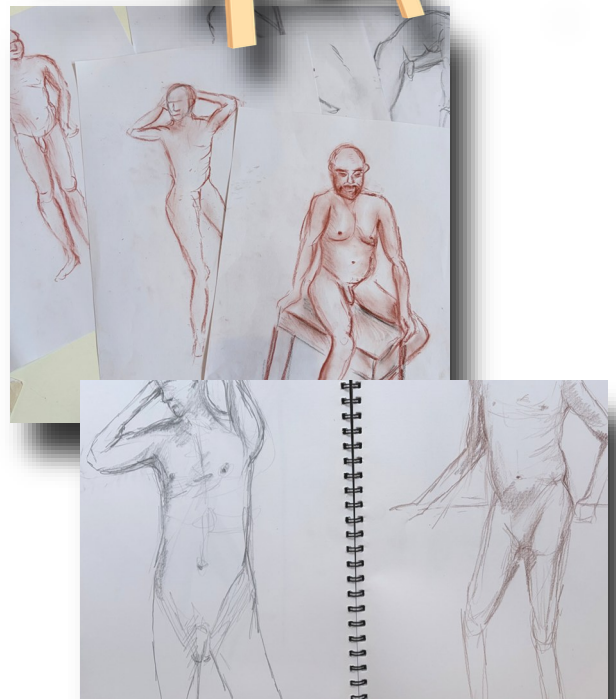
By

Photographer Susan Williams (née Kearney)

Contact: Denise for opening times and for appointments,
4/199-201 Burraneer Bay Road Caringbah South 2229

Email: denise@kassis.com.au

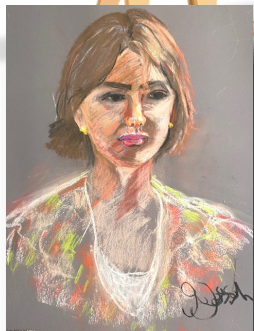
Facebook: Art for the Soul Instagram: [denisekk_gallery](https://www.instagram.com/denisekk_gallery)



Small group this month but the model as usual have some demanding and interesting poses. This class is from the more advanced to beginners developing drawing skills. With some lively music, it's always a great creative way to spend a morning.

Portraiture

Portraiture subject was a lovely young lady as the model. Those members who attended enjoyed themselves and created lovely results.



Critique



Critique for May, by Jacqueline Burgess was truly inspiring. Her passion shone through. Jacqueline's critiques were based on knowledge and passion. She discussed the use of colour, the positioning and most of all the feelings evoked from the works. Peter's award for people's choice, a tribute to his nephew, tugged at everyone's emotional side



Wednesday morning art class By Angela Iliadis

St George Creative Art and Craft Centre
(Old Pole Depot).

The class runs for 10 weeks per the NSW
school terms dates.

23 St Georges Road Penshurst NSW 2222.

All inquiries should be made to me directly and not to the centre.

Contact: angela_iliadis@hotmail.com

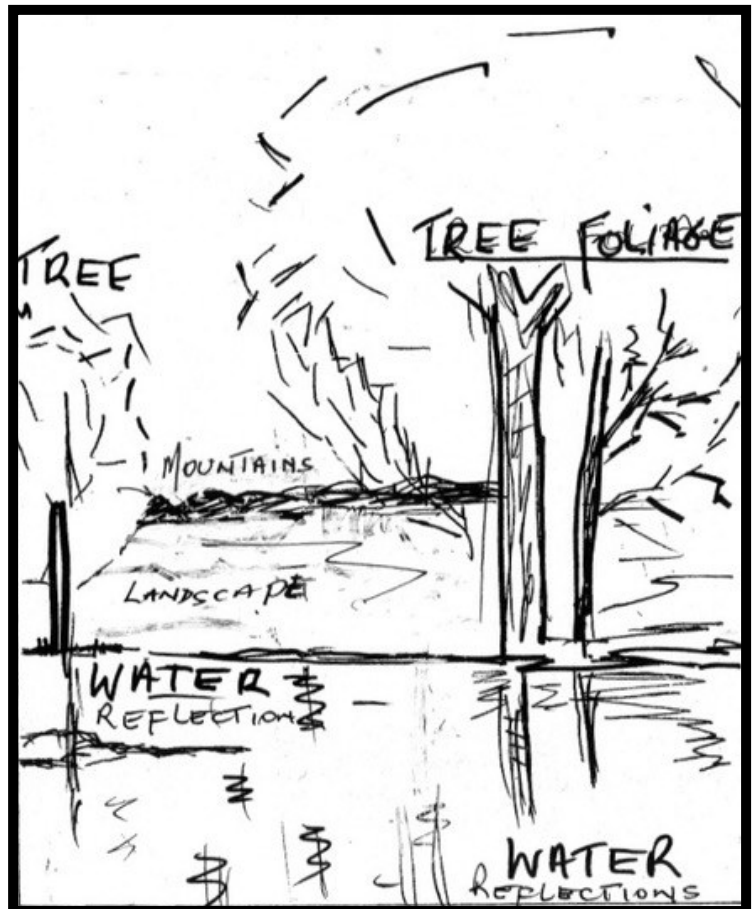
If you are exhibiting, or won an award, please let us know. We would love to promote your artistic adventure.

New!! MONTHLY “HOMEWORK CHALLENGE” Sketch

If this appeals to you and your creative side, the attached basic sketch is this month’s subject. I have indicated mountains, the landscape, tree position and water with reflections as a guide. Any medium, size or colours can be used and your own interpretation of the scene is “The Challenge”.

If you participate in this, it will require the presentation by you or delivery by a friend of your unframed/unmounted artwork at the Critique Night held at the Ramsgate RSL Club, commencing at 6.30pm on the first Thursday of each month where the Winner will be selected.

Join in and have some fun and participate in the “CHALLENGE”.



Membership Alert.

Dear Members,

A reminder that SGAS membership follows the financial year (1 July – 30 June), not the calendar year or your joining anniversary. All current memberships expire at the end of June 2026 and need to be renewed for the 2026–2027 financial year by mid July and before next AGM. Annual fees will remain at \$35 (single) or \$40 (family).

If you have recently joined or renewed, your membership will continue to June 2027 automatically and you do not need to pay again. To renew, submit your payment online with a completed Application Form via the SGAS website www.stgeorgeartsociety.com.au.

You may also print the form, (available at School of Arts or online), complete and return it with payment. Direct debit is preferred, but cash or cheque can be given to a Committee member. You will be provided with a receipt and card via email to save on mobile device or print and keep for proof of membership.

A current membership is required to participate in SGAS activities and exhibit artworks from July 2026 to June 2027.

Thank you for your continued support!

SGAS SPONSORS



RamsgateRSL



Zhi Soon - Member For Banks



Emil & Voulette Dan



Supported by Georges River Council's Venue Hire Grants program



STGEORGE Art SOCIETY INC
FOR THE ENCOURAGEMENT OF ART

PO BOX 4133 KOGARAH BAY NSW 2218
PRESIDENT: Jan Schuster-Callus T: 0410 690607



E: st.george.art.society@gmail.com W: www.stgeorgeartsociety.com.au Editor: Julie Agnew